

# RE-IMAGINING LONDINIUM

A young person's view of the Roman city

Follow the trail to discover six new artworks inspired by Roman London 26 July – 01 September.



# RE-IMAGINING LONDINIUM



Hidden below the streets of the modern City of London are the remains of an earlier settlement. Founded almost 2000 years ago by the Romans, Londinium quickly grew into the largest, most important city in the province.

Reimagining Londinium takes a new look at the city at the heart of Roman Britain for more than three hundred and fifty years. Working with an archaeologist and an artist, primary school children from London have created six new artworks inspired by the ancient city.

Follow this trail to discover the six artworks, each inspired by a different theme. Along the way there are things to spot, archaeology to discover and green spaces in which to take a break.

## ROMAN BRITAIN

On the trail, can you spot...?

- The Romans may have left Britain a long time ago – but many of the buildings in the City of London today were inspired by the past.

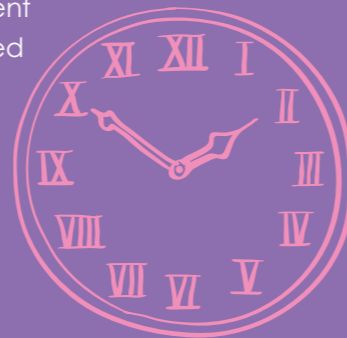
**Can you spot any buildings that look Roman?**

- Roman cities were decorated with lots of statues.

**Can you spot a statue of a Roman god or goddess?**

- The Romans had different numbers to us. They used Roman numerals.

**Can you spot any Roman numerals?**



### 1. FAMILIA ANTE OMNIA (FAMILY OVER ALL)

**City Information Centre (Theme: FAMILY)**

Haseltine Primary School, 3M Class

Archaeologists find lots of pottery. It's really useful for dating things and revealing how people lived in the past.

Face pots form a very distinctive type of pottery and is only found in a few places. Why the people of Roman Britain chose to decorate their pots with faces remains a mystery.



### 2. MILITARY MANOEUVRES

**Noble Street (Theme: ARMY)**

Prior Weston Primary School, Parliament Class

Visible in the gardens below is part of the Roman City Wall. Stretching for nearly three kilometres, these impressive walls once protected the people of Londinium.

Only the lowest part of the wall you can see is Roman. Rebuilt and repaired over the years, today this is a very complicated piece of archaeology!

## TIMELINE

43 CE

Romans successfully conquered Britain, led by the emperor Claudius.

47-50 CE

Londinium founded.

60-1 CE

Boudicca leads a rebellion against Roman forces. Londinium destroyed.

410 CE

Traditional date for the end of Roman Britain.



ALL ROADS LEAD



to ROME

With thanks to the City of London Cultural and Creative Learning Fund, Animate Arts and the participating schools.



scan the QR code to find out more

✕ @thecityofldn f @visitthecity  
www.thecityofldn.com

### 3. A DAY AT THE GAMES

**London's Roman Amphitheatre (Theme: THE GAMES)**

Prior Weston Primary School, Trafalgar Class

Every important Roman city needed an amphitheatre. Discovered by archaeologists in 1988, the remains of London's oldest sporting venue are preserved in the basement of the Guildhall Art Gallery.

A visit to the games lasted all day. Gladiators fought wild animals in the morning, and other gladiators in the afternoon.

Artwork only visible during Guildhall Art Gallery opening times.

### 4. ALL ROADS LEAD TO ROME

**Cheapside (Theme: TRAVEL)**

Haseltine Primary School, 3SC Class

Londinium was a well-connected city. People and goods from around the Roman world arrived by ship on the River Thames. Well-built roads criss-crossed the city and Londinium was at the centre of a network of roads covering the province.

One of the most important, running through the city from east to west, ran very close to where you are standing now.

### 5. ALL THINGS MAY BE BOUGHT IN ROME FOR MONEY

**Leadenhall Market (Theme: TRADE)**

Harry Gosling Primary School, Purple Class

Beneath this impressive Victorian market archaeologists found the remains of a Roman market, or Forum as it was called. Here you could buy goods from around the Roman world and beyond: olives from Spain, pottery from France and perhaps even pepper from India.

### 6. WELCOME TO THE ROMAN BATH HOUSE

**Billingsgate Roman House and Baths (Theme: LEISURE)**

Harry Gosling Primary School, Lilac Class

The Romans loved to relax at the Baths. Can you believe archaeologists working in London have discovered the remains of 11 bathhouses so far?

Billingsgate Roman Baths was one of the smallest. With three main rooms, these private baths were probably used exclusively by the rich family who lived in this house.

Access to Billingsgate Roman House and Baths is by guided tour only (see website for details).

2

Noble Street  
(Theme: ARMY)  
Noble St,  
London  
EC1A 4HJ



2

3

Guildhall Art Gallery & London's  
Roman Amphitheatre  
(Theme: THE GAMES)  
Guildhall Yard,  
London  
EC2V 5AE



5 Leadenhall Market  
(Theme: TRADE)  
Gracechurch St,  
London EC3V 1LT

ST MARTIN'S LE GRAND

NOBLE ST

GRESHAM ST

BASINGHALL ST

3

5 min

GUTTER LA

KING ST

5 min

CHEAPSIDE

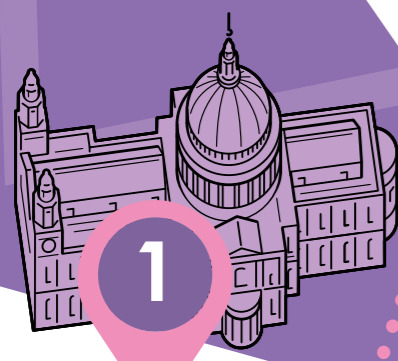
4

LOTHBURY

PRINCE'S ST

THREADNEEDLE ST

St Paul's



1

10 min

POULTRY

Bank

CORNHILL

BREAD ST

CANNON ST

4 Cheapside (Theme: TRAVEL)  
St Mary Le Bow Church,  
Cheapside, London EC2V 6AU



15 min

5

Lloyd's Building

LEADENHALL PL

LIME ST

LOMBARD ST

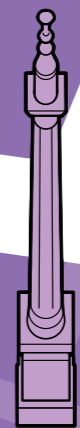
KING WILLIAM ST

GRACECHURCH ST

FENCHURCH ST

10 min

Monument



EASTCHEAP

6



6 Billingsgate Roman House & Baths  
(Theme: LEISURE)  
101 Lower Thames St,  
London EC3R 6DL

1 City Information Centre (Theme: FAMILY)  
St. Paul's Churchyard,  
London EC4M 8BX

FAMILIA  
ANTE OMNIA



UPPER THAMES ST

SOUTHWARK BRIDGE

LOWER THAMES ST